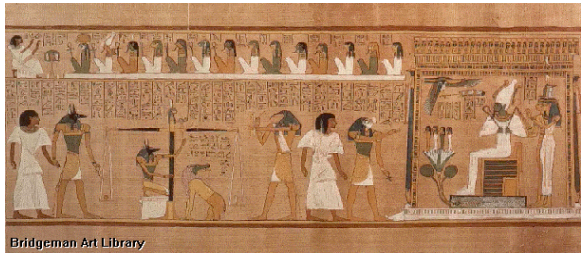


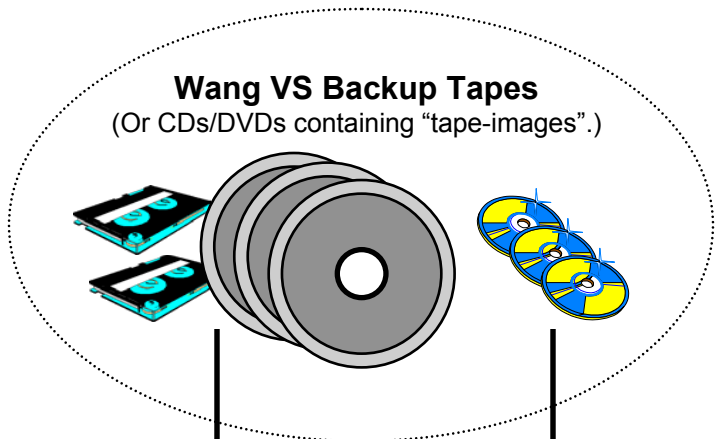
# *Retrieval and Conversion of Wang VS Data-Files*



**Muller Media Conversions, Inc.**

[www.mullermedia.com](http://www.mullermedia.com)

*“Raiders of the Lost Archives”*



P

**Preparation:** Set up practically any Win32 PC system with a SCSI card and ASPI support. Connect appropriate tape drive type\* (e.g. 8mm, QIC, etc). Then install and configure MMC's Fast 'n Easy™ software.

\*Optionally, MMC can preserve your tape contents in "tape-image" form on long-lived CD or DVD media, eliminating the need for a tape drive while verifying the readability of the original tapes.

1

File listings

**Step 1.** (Recommended but not required.) "FnE" can create printable file directory listings from any tape.

2

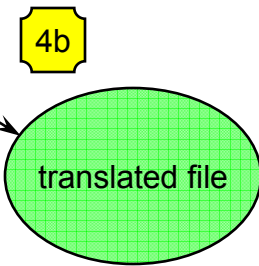
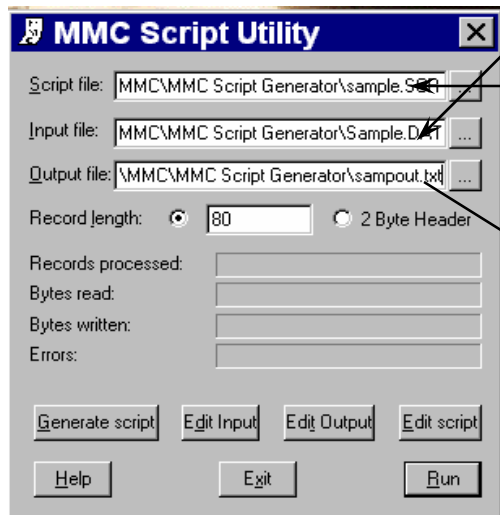
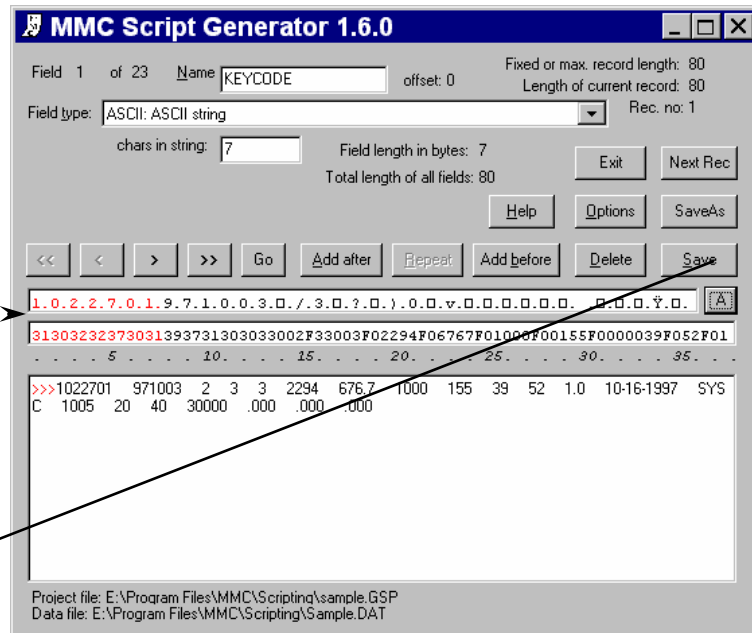
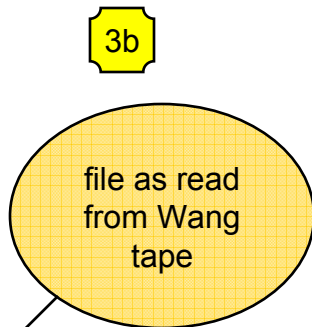
converted file(s)

**Step 2.** The entire tape or any specified files may be converted at any time. "FnE" extracts the data from VS Backup tapes (several other formats also supported) and will even handle Wang indexed files and compressed files, producing a sequential output file on your local or network drive.

3a

**Step 3** depends on the type of data being converted. (a) If the file is already in **plain ASCII**, most applications will be able to import the data, so the conversion process is essentially complete. (b) If the data contains **packed or binary fields**, and your application cannot import these directly, you can follow the additional steps outlined on the next slide. (c) For **Wang Imaging** files, see the last slide.  
...(Note that Wang **wordprocessing** files are handled by a completely different MMC software package.)

**Step 3b.** [for data files containing packed and binary fields] Use GenScript\* to view records of the raw file (in hex and ASCII or EBCDIC). The record layout can then be defined interactively. As each field is defined one can see, in the window below, the output that would be produced. When done, a script file is created. Our customers love this program! "By far the easiest to use of its kind..." Create output in flat ASCII, tabbed, comma-delimited or XML formats.



**Step 4b.** RunScript\*, guided by the script file created in the previous step, translates the raw file to the final result--typically a tab or comma-delimited ASCII file which can then be imported to a database or spreadsheet. Our GenScript and RunScript programs truly live up to the Fast and Easy family name.

\*GenScript (fully functional) and RunScript (demo version) are available for evaluation in the download area at [www.mullermedia.com](http://www.mullermedia.com). A full RunScript license is included with the Fast 'n Easy™ Wang datafile reader.  
 \*\*In rare instances, it can be useful to add advanced script logic and functions not generated by GenScript. This can be done by editing the script file in Notepad. A complete definition of the low-level scripting language is in the help file.

**Step 3c.** [for document files from Wang VS Imaging systems]

Note that imaging metadata is generally stored in Wang PACE tables, which can be processed using the techniques shown on the previous slide.

This slide shows how best to handle the actual image/document files.

Most systems use WIF\* (Wang Image Format) and may also manage "COLD" style report/text files.

This special application, **WIFAUTO**, will translate WIF to TIF, with optional recursion through subfolders. It will handle the TXT files as well on the same pass, and can automatically ZIP groups of TIF and TXT files as it goes.

**WIFAUTO** is an optional component, not included in the basic price of *Fast 'n Easy*<sup>TM</sup>.

\*Note that some Wang imaging systems were set up to store native TIF images. Those do not need this extra step.

